

The Sample Ballot contains all contests for Mason County. Only the Sample Ballot contest that apply to the precinct where your are registered to vote will appear on your Official Ballot.

Instructions

How to vote

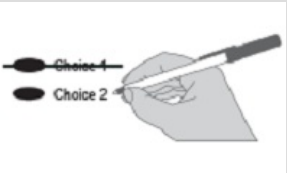


Use a dark ink pen to completely fill in the oval to the left of your choice.

Do not use a felt tip marker.
Vote for one in each race.

If you vote for more than one in a race or choose not to vote, no votes will be counted for that race.

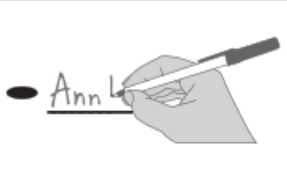
If you make a mistake



Draw a line through the entire response or candidate's name.

Then you may make another choice.

Optional write-in



To vote for a candidate not listed, fill in the oval to the left of the blank line and print the candidate's name.

Mason County Auditor's Office
Election Department - Vote Centers
 (360) 427-9670 ext. 470
 elections@masoncountywa.gov
 www.masoncountywaelections.gov

Shelton Location:
 411 N 5th St - Second floor
Monday - Friday 9:00 am - 4:00 pm
Saturday, November 2 9:00 am - 4:00 pm
Election Day 9:00 am - 8:00 pm

Belfair Location (Temporary):
 460 NE Old Belfair Hwy - Back of building
October 28 - 31 9:00 am - 4:00 pm
November 1, 2, and 4 9:00 am - 4:00 pm
Election Day 9:00 am - 8:00 pm

To update your address,
contact our office or online at VoteWA.gov.

Who donates to campaigns?

View information on financial contributors for federal candidates:
Federal Election Commission
www.fec.gov
 Toll Free 1 (800) 424-9530

View financial contributors for candidates and measures:
Public Disclosure Commission
www.pdc.wa.gov
 Toll Free 1 (877) 601-2828



Start Voting Here

State Measures

Initiative to the People
Initiative Measure No. 2066

Initiative Measure No. 2066 concerns regulating energy services, including natural gas and electrification. This measure would repeal or prohibit certain laws and regulations that discourage natural gas use and/or promote electrification, and require certain utilities and local governments to provide natural gas to eligible customers.

Should this measure be enacted into law?

Yes

No

Initiative to the Legislature
Initiative Measure No. 2109

Initiative Measure No. 2109 concerns taxes. This measure would repeal an excise tax imposed on the sale or exchange of certain long-term capital assets by individuals who have annual capital gains of over \$250,000. This measure would decrease funding for K-12 education, higher education, school construction, early learning, and childcare.

Should this measure be enacted into law?

Yes

No

Initiative to the Legislature
Initiative Measure No. 2117

Initiative Measure No. 2117 concerns carbon tax credit trading. This measure would prohibit state agencies from imposing any type of carbon tax credit trading, and repeal legislation establishing a cap and invest program to reduce greenhouse gas emissions. This measure would decrease funding for investments in transportation, clean air, renewable energy, conservation, and emissions-reduction.

Should this measure be enacted into law?

Yes

No

Initiative to the Legislature
Initiative Measure No. 2124

Initiative Measure No. 2124 concerns state long term care insurance. This measure would provide that employees and self-employed people must elect to keep coverage under RCW 50B.04 and could opt-out any time. It would also repeal a law governing an exemption for employees. This measure would decrease funding for Washington's public insurance program providing long-term care benefits and services.

Should this measure be enacted into law?

Yes

No

Partisan Offices

Federal

United States President /

Vice President

Kamala D. Harris / Tim Walz
 Democratic Party Nominees

Donald J. Trump / JD Vance
 Republican Party Nominees

Robert F. Kennedy Jr. / Nicole Shanahan
 We The People Party Nominees

Jill Stein / Rudolph Ware
 Green Party Nominees

Claudia De la Cruz / Karina Garcia
 Socialism and Liberation Party Nominees

Rachele Fruit / Dennis Richter
 Socialist Workers Party Nominees

Joseph Kishore / Jerry White
 Socialist Equality Party Nominees

Chase Oliver / Mike ter Maat
 Libertarian Party Nominees

Cornel West / Melina Abdullah
 Justice For All Party Nominees

Shiva Ayyadurai / Crystal Ellis
 Independent Candidates

READ: Each candidate for President and Vice President is the official nominee of a political party. For other partisan offices, each candidate may state a political party that he or she prefers. A candidate's preference does not imply that the candidate is nominated or endorsed by the party, or that the party approves of or associates with that candidate.

United States
U.S. Senator

Maria Cantwell
 (Prefers Democratic Party)

Dr Raul Garcia
 (Prefers GOP Party)

Continue voting next side



Vote Both Sides

Partisan Offices

Federal

If a primary election was held for an office, the two candidates who received the most votes in the Primary advanced to the General Election. Each candidate for partisan office may state a political party that he or she prefers. A candidate's preference does not imply that the candidate is nominated or endorsed by the party, or that the party approves of or associates with that candidate. The election for President and Vice President is different. Candidates for President and Vice President are the official nominees of their political party.

Congressional District 6 U.S. Representative

- Emily Randall (Prefers Democratic Party)
- Drew C MacEwen (Prefers Republican Party)
-

State

Governor

- Bob Ferguson (Prefers Democratic Party)
- Dave Reichert (Prefers Republican Party)
-

Lt. Governor

- Denny Heck (Prefers Democratic Party)
- Dan Matthews (Prefers Republican Party)
-

Secretary of State

- Steve Hobbs (Prefers Democratic Party)
- Dale Whitaker (Prefers Republican Party)
-

State Treasurer

- Mike Pellicciotti (Prefers Democratic Party)
- Sharon Hanek (Prefers Republican Party)
-

State Auditor

- Pat (Patrice) McCarthy (Prefers Democratic Party)
- Matt Hawkins (Prefers Republican Party)
-

Attorney General

- Pete Serrano (Prefers Republican Party)
- Nick Brown (Prefers Democratic Party)
-

Commissioner of Public Lands

- Jaime Herrera Beutler (Prefers Republican Party)
- Dave Upthegrove (Prefers Democratic Party)
-

Nonpartisan Office

Superintendent of Public Instruction

- Chris Reykdal
- David Olson
-

Partisan Offices

Insurance Commissioner

- Patty Kuderer (Prefers Democratic Party)
- Phil Fortunato (Prefers Republican Party)
-

Legislative District 35 State Representative Position 1

- Dan Griffey (Prefers Republican Party)
-

Legislative District 35 State Representative Position 2

- Travis Couture (Prefers Republican Party)
- James DeHart (Prefers Democratic Party)
-

County

Mason County Commissioner District 1

- Randy Neatherlin (Prefers Independent Party)
- William "Will" Harris (Prefers Republican Party)
-

Mason County Commissioner District 2

- Tom Beben (States No Party Preference)
- Pat Tarzwell (Prefers Republican Party)
-

Nonpartisan Offices

Judicial

Supreme Court Justice Position 2

- Sal Mungia
- Dave Larson
-

Supreme Court Justice Position 8

- Steve Gonzalez
-

Supreme Court Justice Position 9

- Sheryl Gordon McCloud
-

Court of Appeals, Division 2, District 2, Judge Position 2

- Rebecca Glasgow
-

Mason County Superior Court Judge Position 1

- David Stevens
-

Mason County Superior Court Judge Position 2

- Monty D Cobb
-

Mason County Superior Court Judge Position 3

- Tirsia Butler
-

Local

Public Utility District 1 Commissioner District 3

- Johnny Janda "Jack"
-

Public Utility District 3 Commissioner District 3 6 Year Short and Full Term

- Jeff McHargue
-

**Vote Early! Return Early!
Ensure your vote counts!**

**Return your ballot no later than:
Tuesday November 5, 2024.**

Thank you!

Vote Both Sides